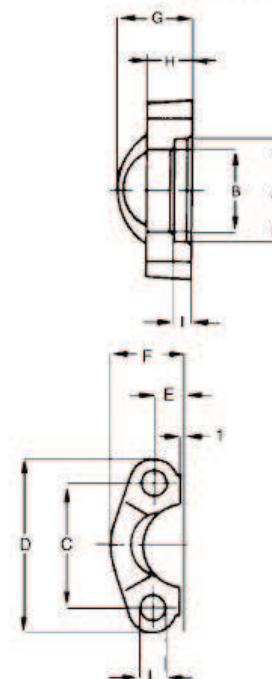


### Flange SAE bi-partido

material de aço forjado, zincado  
inoxidável sob pedido



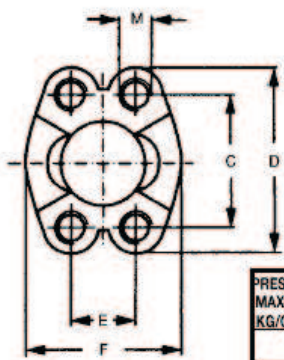
PRESSÃO MAXIMA KG/CM2	MEDIDA SAE	TIPO	DIMENSÕES										ROSCAS		PESO Kg		
			A	B	C	D	E	F	G	H	I	L	metrica	unc			
<b>3.000 P.S.I.</b>																	
345	1/2"	<b>AFS 301</b>	30,96	24,26	38,10	54	8,74	22,8	19	13	6,22	8,75	M 8	5/16	0,12		
345	3/4"	<b>AFS 302</b>	38,89	32,13	47,63	65	11,13	25,9	22	14	6,22	10,75	M 10	3/8	0,16		
345	1"	<b>AFS 303</b>	45,24	38,48	52,37	70	13,08	29,2	24	16	7,49	10,75	M 10	3/8	0,22		
276	1 1/4"	<b>AFS 304</b>	51,59	43,69	58,72	79	15,09	36,3	22	14	7,49	12,75	M 10	7/16	0,30		
207	1 1/2"	<b>AFS 305</b>	61,09	50,80	69,85	94	17,86	41,1	25	16	7,49	14,75	M 12	1/2	0,43		
207	2"	<b>AFS 306</b>	72,24	62,74	77,77	102	21,44	48,2	26	16	9,02	14,75	M 12	1/2	0,56		
172	2 1/2"	<b>AFS 307</b>	84,94	74,93	88,90	114	25,40	54,1	38	19	9,02	14,75	M 12	1/2	0,74		
138	3"	<b>AFS 308</b>	102,39	90,93	106,38	135	30,96	65,3	41	22	9,02	16,75	M 16	8/8	1,30		
34	3 1/2"	<b>AFS 309</b>	115,10	102,36	120,65	152	34,92	69,5	28	22	10,72	17	M 16	5/8	1,27		
34	4"	<b>AFS 310</b>	127,79	115,06	130,18	162	38,88	76,0	35	25	10,72	17	M 16	5/8	1,65		
34	5"	<b>AFS 311</b>	153,19	140,46	152,40	184	46,04	90,0	41	28	10,72	17	M 16	5/8	2,50		
<b>6.000 P.S.I.</b>																	
420	1/2"	<b>AFS 601</b>	32,54	24,64	40,49	56	9,12	23,6	22	16	7,24	8,75	M 8	5/16	0,16		
420	3/4"	<b>AFS 602</b>	42,06	32,51	50,80	71	11,91	30,0	28	19	8,26	11	M 10	3/8	0,34		
420	1"	<b>AFS 603</b>	48,41	38,86	57,15	81	13,89	34,8	33	24	9,02	13	M 12	7/16	0,51		
420	1 1/4"	<b>AFS 604</b>	54,76	44,45	66,68	95	15,88	38,6	38	27	9,78	15	M 14	1/2	0,80		
420	1 1/2"	<b>AFS 605</b>	64,29	51,56	79,38	113	18,26	47,5	43	30	12,07	17	M 16	5/8	1,44		
420	2"	<b>AFS 606</b>	80,16	67,56	96,82	133	22,23	56,9	52	37	12,07	21	M 20	3/4	2,10		



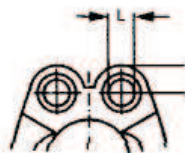
### Flange SAE inteira

material  
aço forjado ST 52.3  
zincado  
aço inoxidável sob pedido

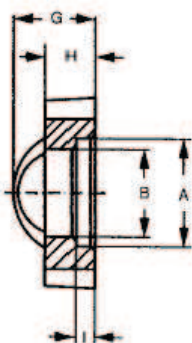
**SOLICITE PELO CÓDIGO:**  
**FLANGE INTEIRA**  
**FURO PASSANTE** \_\_\_\_\_ **AFSI...**  
**FLANGE INTEIRA ROSCADA** \_\_\_\_\_ **GFSI...**



FLANGE ROSCADA



FLANGE FURO  
PASSANTE



PRESSÃO MAXIMA KG/CM2	MEDIDA SAE	TIPO	DIMENSÕES										M		PESO Kg		
			A	B	C	D	E	F	G	H	I	L	metrica	unc			
<b>3.000 P.S.I.</b>																	
345	1/2"	<b>AFSI301</b>	30,96	24,26	38,10	54	17,48	45,6	19	13	6,22	8,75	M 8x30	5/16x1 1/4	0,12		
345	3/4"	<b>AFSI302</b>	38,89	32,13	47,63	65	22,23	51,8	22	14	6,22	10,75	M 10x35	3/8x1 1/2	0,16		
345	1"	<b>AFSI303</b>	45,24	38,48	52,37	70	26,19	58,4	24	16	7,49	10,75	M 10x35	3/ x1 1/2	0,22		
276	1 1/4"	<b>AFSI304</b>	51,59	43,69	58,72	79	30,18	72,6	22	14	7,49	12	M 10x35	-	0,30		
276	1 1/4"	<b>AFSI304L1275</b>	51,59	43,69	58,72	79	30,18	72,6	22	14	7,49	12,75	M 10x35	-	0,30		
207	1 1/2"	<b>AFSI305</b>	61,09	50,80	69,85	94	35,71	82,2	25	16	7,49	13,5	M 12x35	-	0,43		
207	2"	<b>AFSI306</b>	72,24	62,74	77,77	102	42,88	96,4	26	16	9,02	13,5	M 12x35	-	0,56		
172	2 1/2"	<b>AFSI307</b>	84,94	74,93	88,90	114	50,80	108,2	38	19	9,02	13,5	M 12x40	1/2x1 3/4	0,74		
138	3"	<b>AFSI308</b>	102,39	90,93	106,38	135	61,93	130,6	41	22	9,02	16,75	M 16x50	5/8x2"	1,30		
34	3 1/2"	<b>AFSI309</b>	115,10	102,36	120,65	152	69,85	139	28	22	10,72	17	M 16x50	5/8x2"	1,27		
34	4"	<b>AFSI310</b>	127,79	115,06	130,18	162	77,77	152	35	25	10,72	17	M 16x50	5/8x2"	1,65		
34	5"	<b>AFSI311</b>	153,19	140,46	152,40	184	92,08	180	41	28	10,72	17	M 16x50	5/8x2"	2,50		
<b>6.000 P.S.I.</b>																	
420	1/2"	<b>AFSI601</b>	32,54	24,64	40,49	56	18,24	47,2	22	16	7,24	8,75	M 8x30	5/16x1 1/4	0,16		
420	3/4"	<b>AFSI602</b>	42,06	32,51	50,80	71	23,80	60	28	19	8,26	11	M 10x35	3/8x1 1/2	0,34		
420	1"	<b>AFSI603</b>	48,41	38,86	57,15	81	27,76	69,6	33	24	9,02	13	M 12x45	7/16x1 3/4	0,51		
420	1 1/4"	<b>AFSI604</b>	54,76	44,45	66,68	95	31,75	77,2	38	27	9,78	15"	M 14x45	1/2x1 3/4	0,80		
420	1 1/2"	<b>AFSI605</b>	64,29	51,56	79,38	113	36,50	95	43	30	12,07	17	M 16x50	5/8x2"	1,44		
420	2"	<b>AFSI606</b>	80,16	67,56	96,82	133	44,45	113,8	52	37	12,07	21	M 20x70	3/4x2 1/2	2,10		